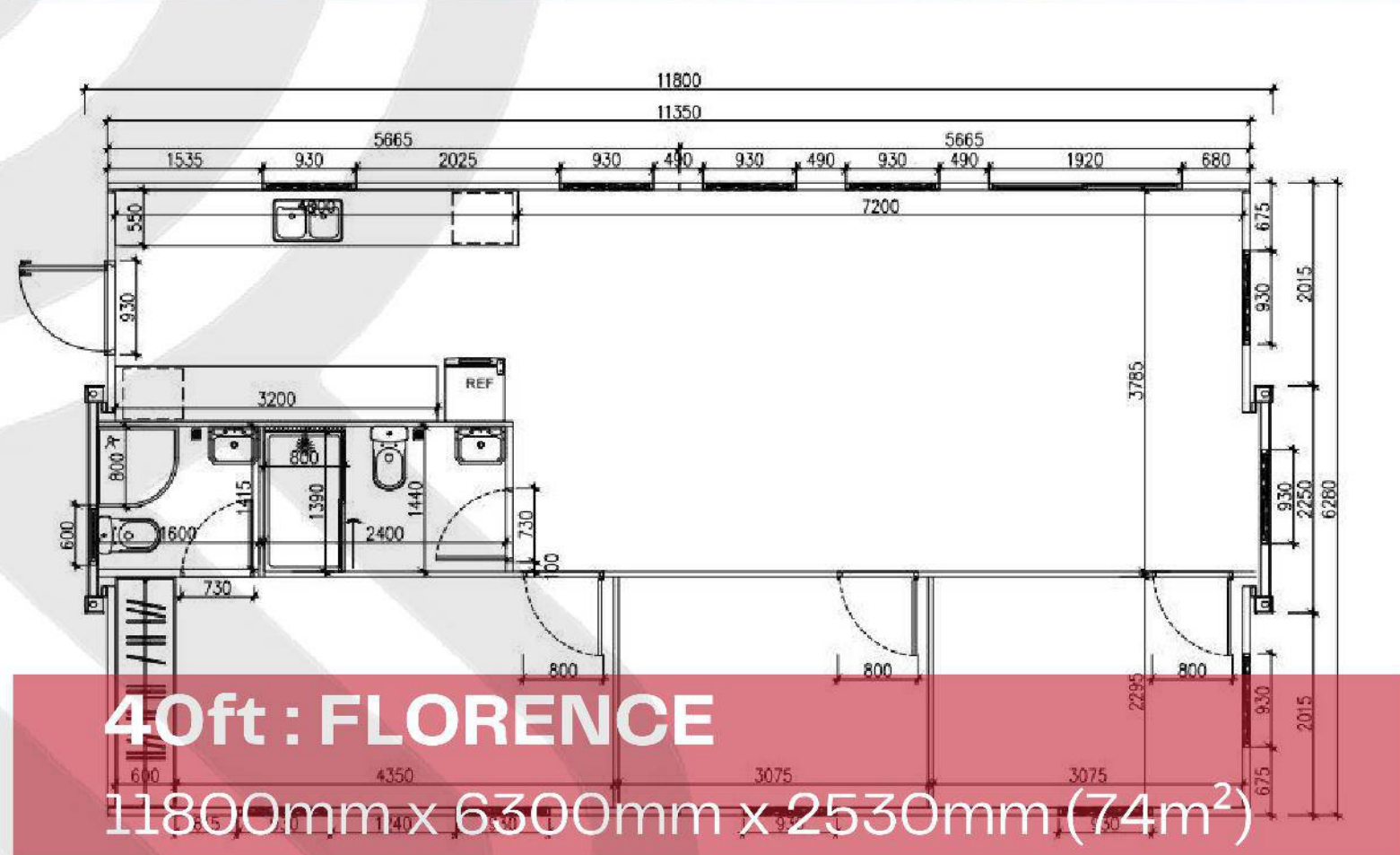
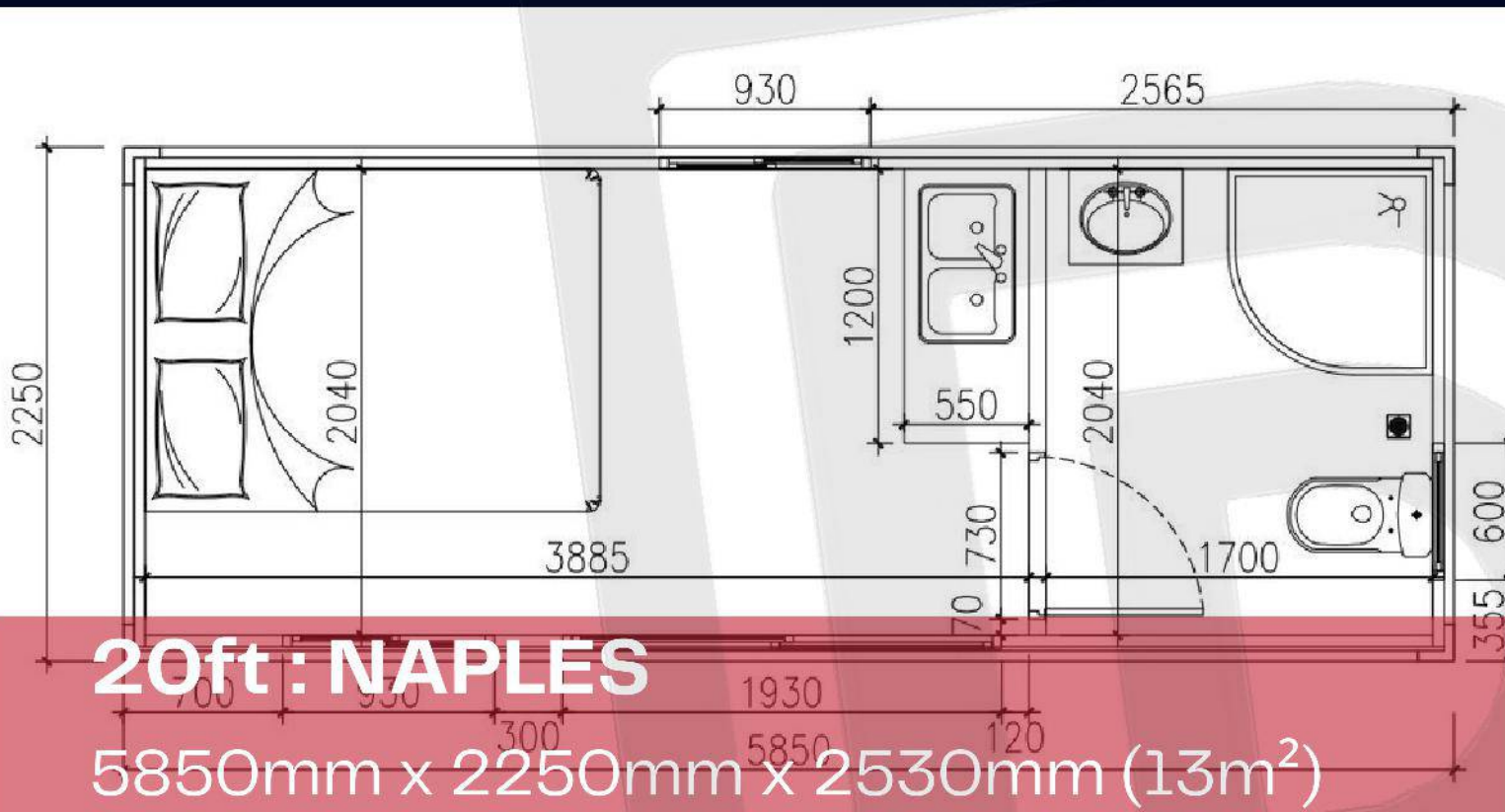


RAYCO MODULAR

© All listed products copyrighted by the Rayco-Group



FEATURES

- Bespoke Design – Choose your own internal layout
- Robust Galvanised Steel Frame Capable Of Withstanding All Weather Conditions
- Fully PIR Fireproof Insulated Walls, Floor & Ceiling / Roof
- Double Glazed PVC Windows & Door – Black or White
- Fully Fitted Bathroom
- Fully Fitted Kitchen Cabinets & Sink
- Quick Installation Time
- Electrical & Plumbing Lines Pre-installed
- Choice Of Decorative Cladding Colour
- Won't Deteriorate Like A Log Cabin
- Doesn't Require Concrete Foundation
- Heating and Hot Water – OPTIONAL

PRICING

Naples 13m² : €18,500 + VAT @ 23%

Milan 23m² : €28,500 + VAT @ 23%

Rome 37m² : €29,500 + VAT @ 23%

Florence 74m² : €48,500 + VAT @ 23%

INSTALLATION

€8000–€15,000 + VAT @ 13%

Costs can vary depending on site conditions

Nationwide Delivery & Installation

**Contact
Information**



087-3505095



info@rayco-group.com



Ballinvunna, Kilmuckridge, Gorey, Wexford, Ireland

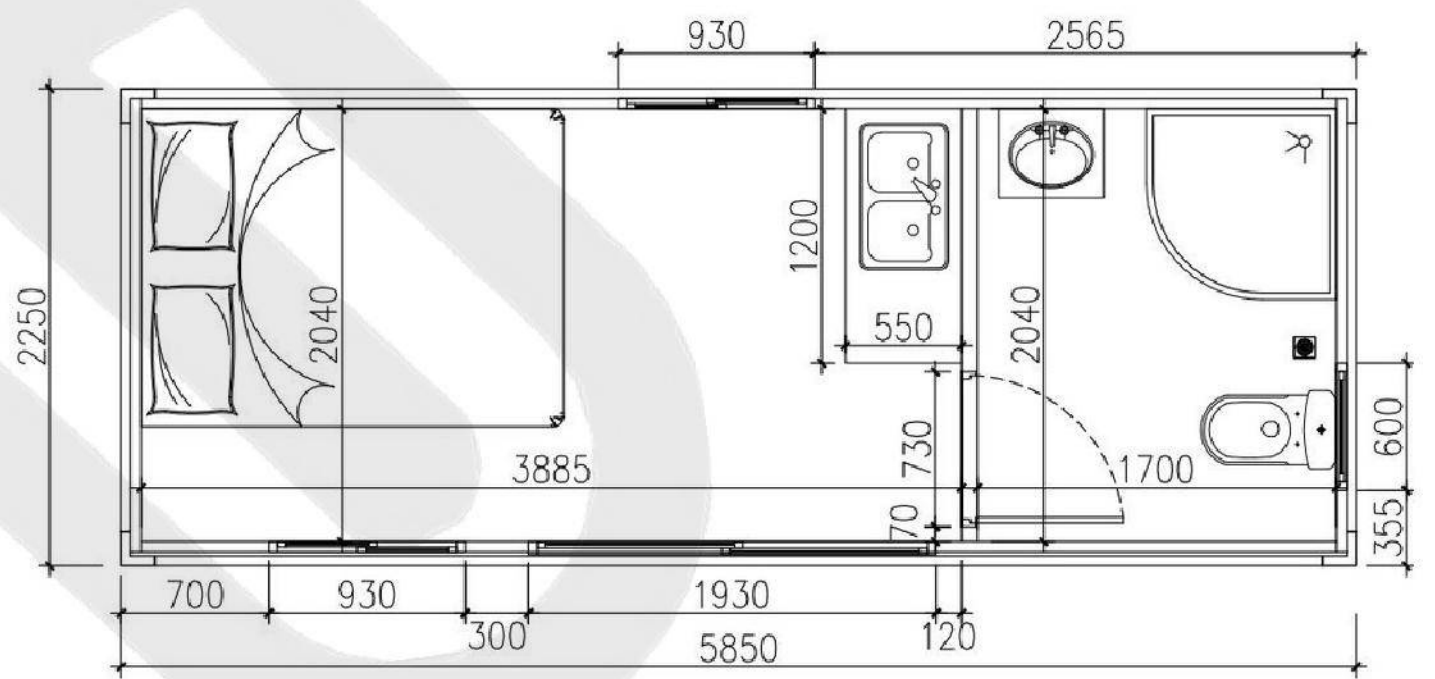
RAYCO MODULAR

© All listed products copyrighted by the Rayco-Group 2023



NAPLES 13m²

The discreet footprint of our Naples design means planning requirements won't present an issue, allowing you peace of mind when choosing this model.



There is no compromise on quality with our smaller units. The Naples arrives fully insulated, pre-wired, pre-plumbed and ready for connection to services. Secure, double glazed windows and doors are standard as well as bathroom and kitchen essentials installed. With a range of attractive cladding options to choose from, this option provides expedient solution for any much-needed dwelling or working space.

Nationwide Delivery & Installation

**Contact
Information**



087-3505095



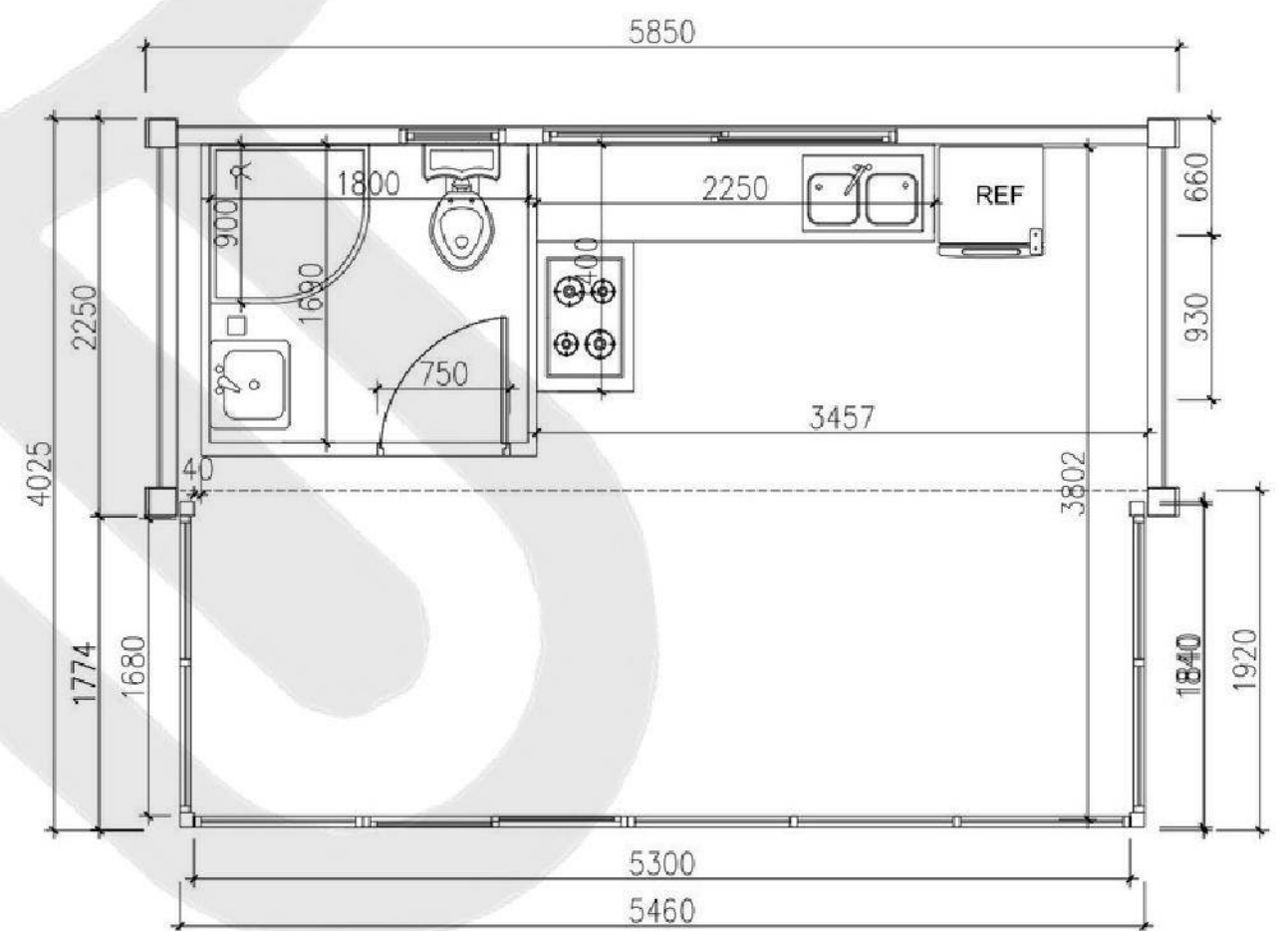
info@rayco-group.com



Ballinvunna, Kilmuckridge, Gorey, Wexford, Ireland

RAYCO MODULAR

© All listed products copyrighted by the Rayco-Group 2023



MILAN 23m²

As with all our modular units, we take care to provide models to suit everybody and every need. The Milan is combines a clever usage of space with modern design to create a practical space with an aesthetic flair. Unfolding to a comfortable 23m², you can own an affordable dwelling without needing to fulfill any planning requirements.

Nationwide Delivery & Installation

**Contact
Information**



087-3505095



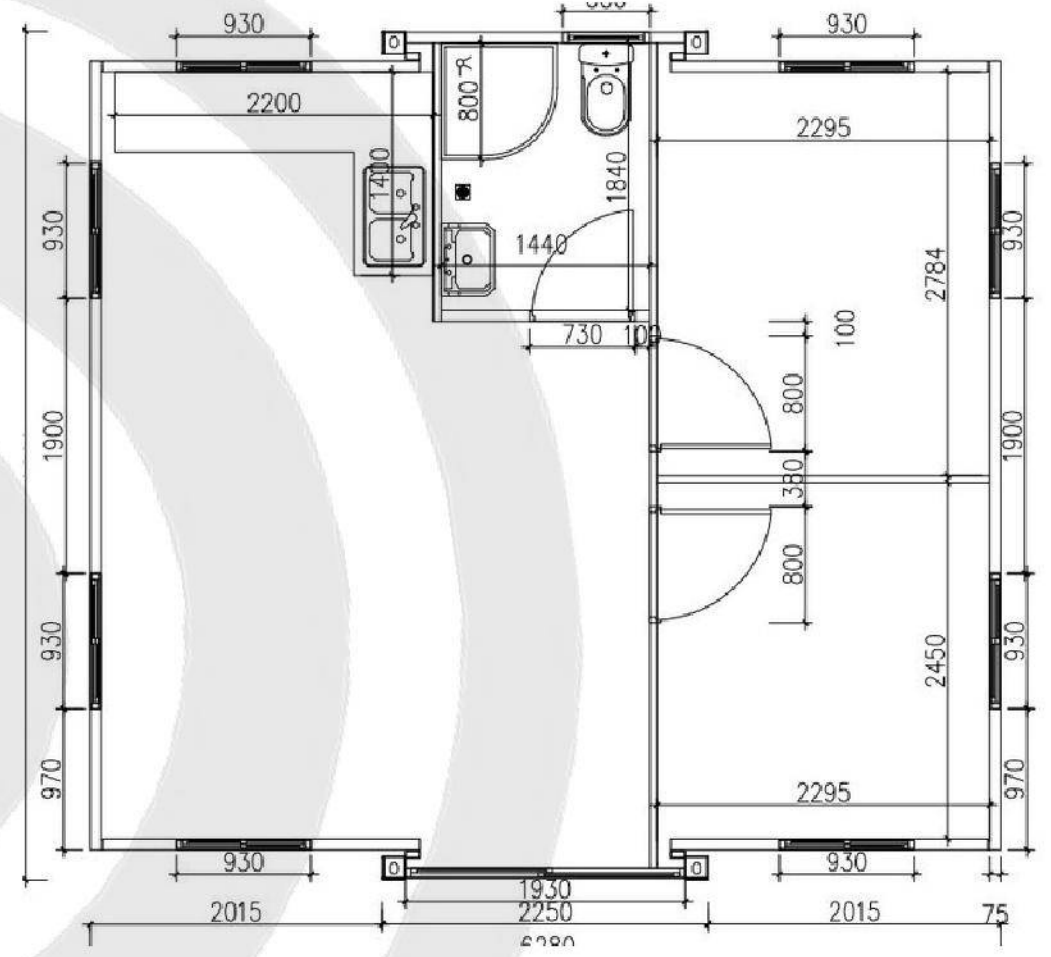
info@rayco-group.com



Ballinvunna, Kilmuckridge, Gorey, Wexford, Ireland

RAYCO MODULAR

© All listed products copyrighted by the Rayco-Group 2023



ROME 37m²

Our featured demo home showcases just how sturdy, practical and homely our modular units are. Expanding to a spacious 37m², the Rome is the perfect example of our steel design surpass log cabins for durability, value and comfort. With a high resale value, this provides an optimal solution for couples seeking an alternative to renting or a temporary residence for young families saving for their first property.

Nationwide Delivery & Installation

Contact Information



087-3505095



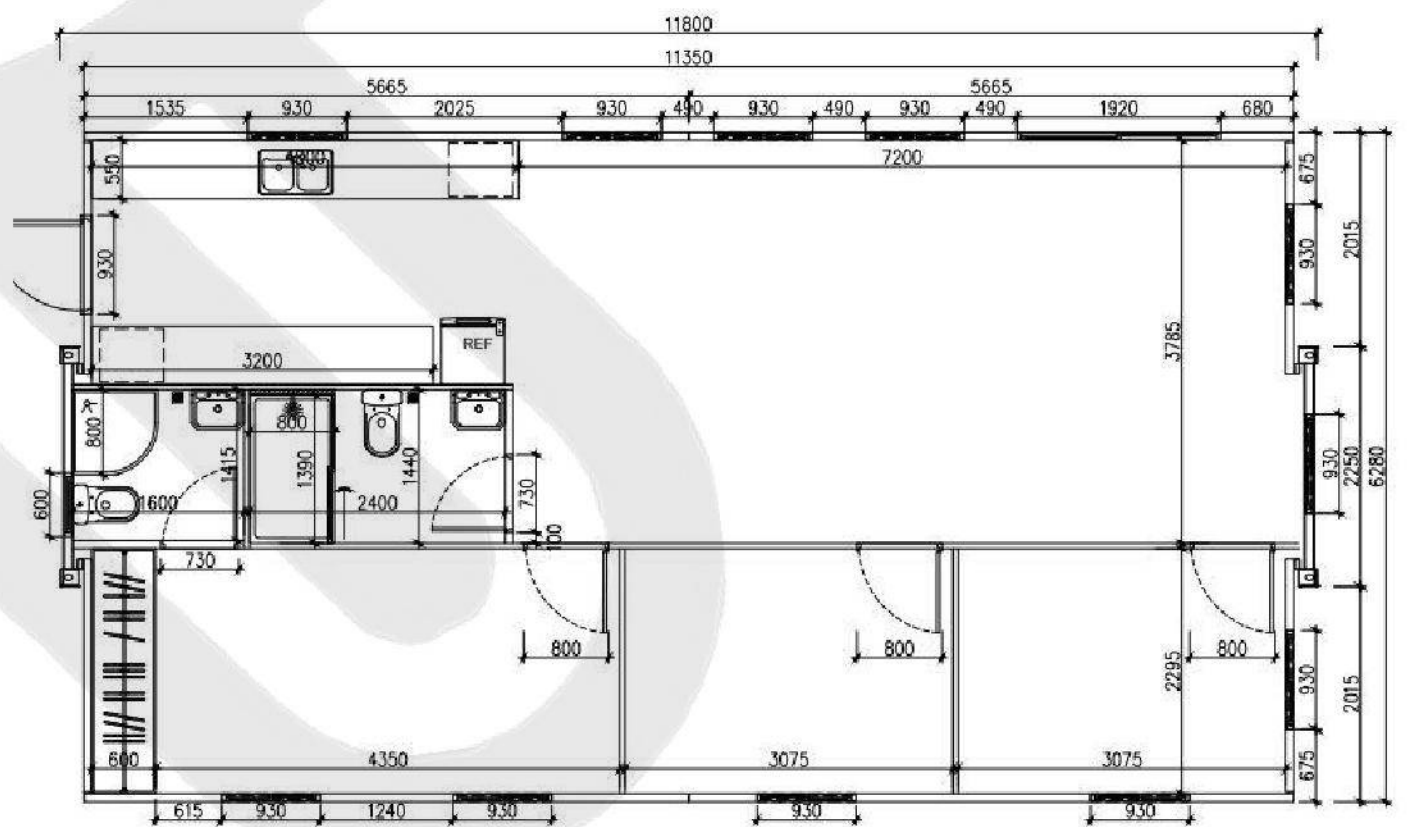
info@rayco-group.com



Ballinvunna, Kilmuckridge, Gorey, Wexford, Ireland

RAYCO MODULAR

© All listed products copyrighted by the Rayco-Group 2023



FLORENCE 74m²

The Florence offers you the opportunity of living in a four or five bedroom home for a fraction of the cost. With so much space, you can tailor your layout to your desire, you can even include a second bathroom. Complete with pitched roof, insulation and high performing thermal PIR panels, you could be moved in and fully switched on within weeks of delivery. As with all our models, there is no need for a concrete base – saving you thousands on this potentially lifetime living solution for you and your family.

Nationwide Delivery & Installation

Contact Information



087-3505095



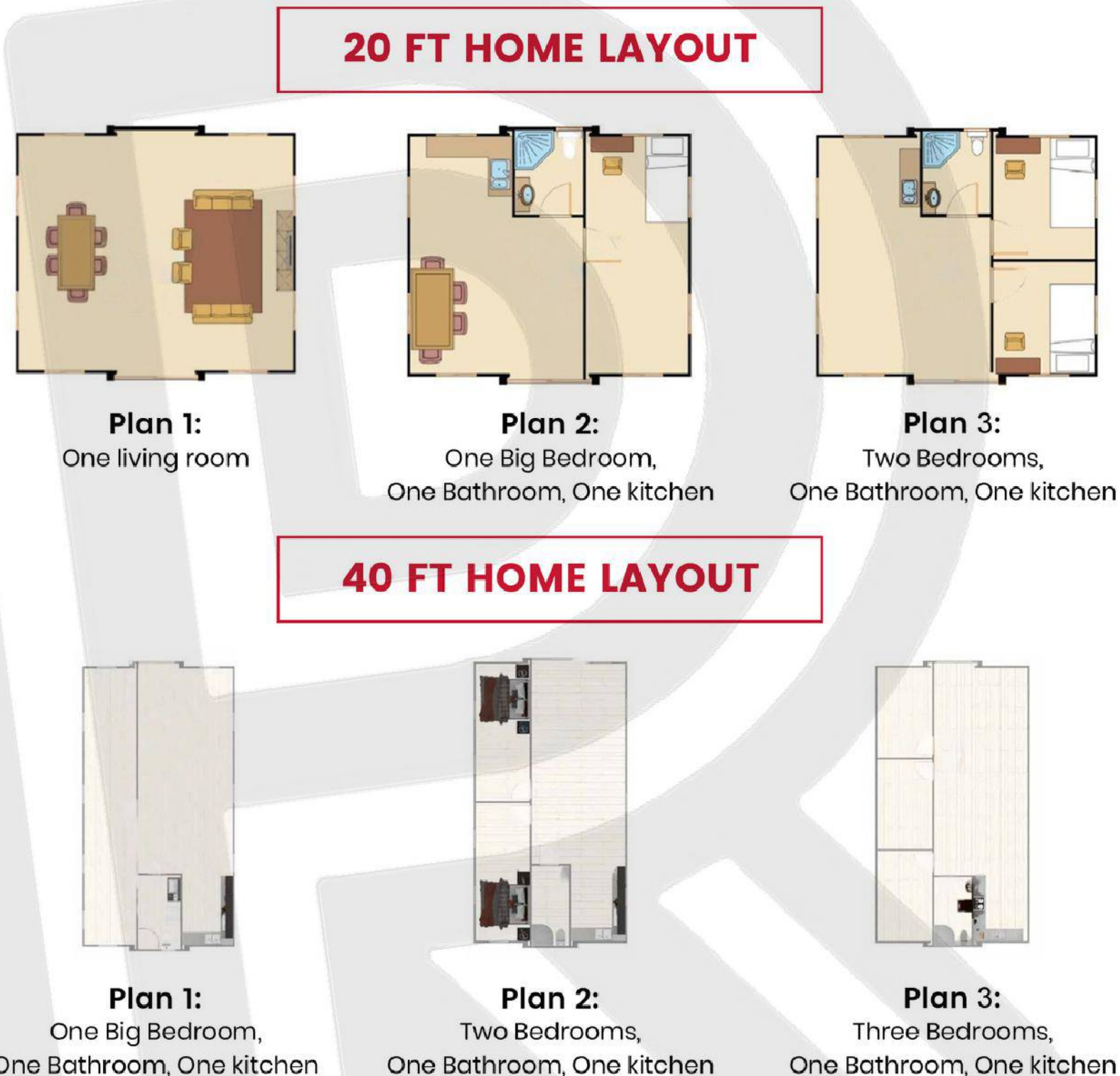
info@rayco-group.com



Ballinvunna, Kilmuckridge, Gorey, Wexford, Ireland

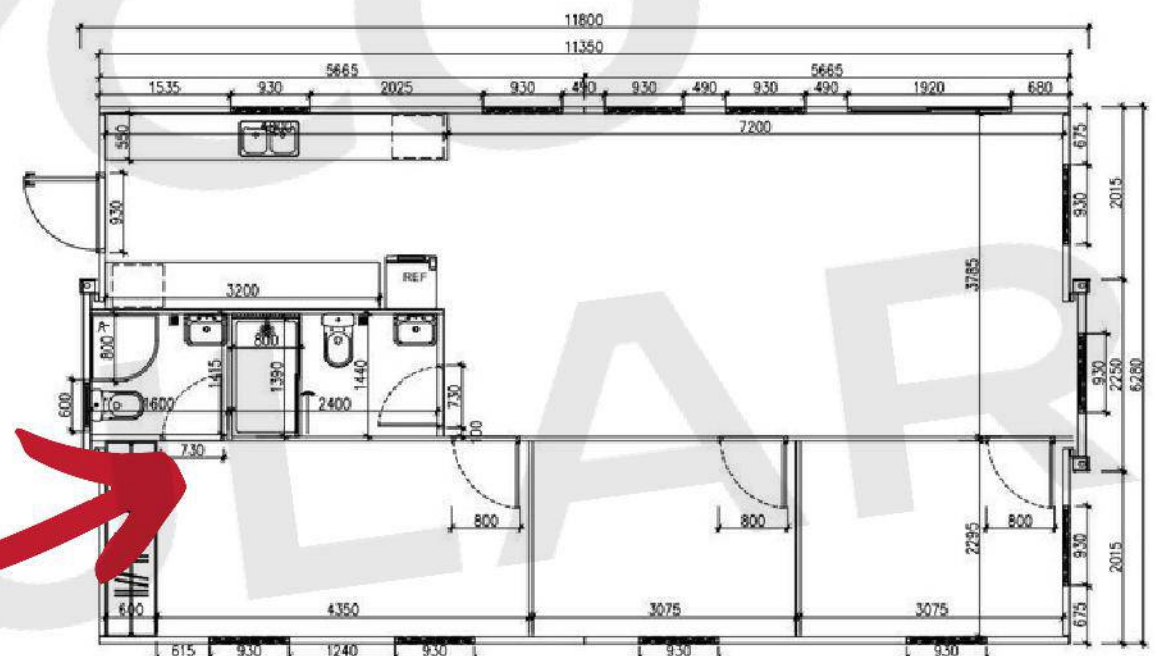
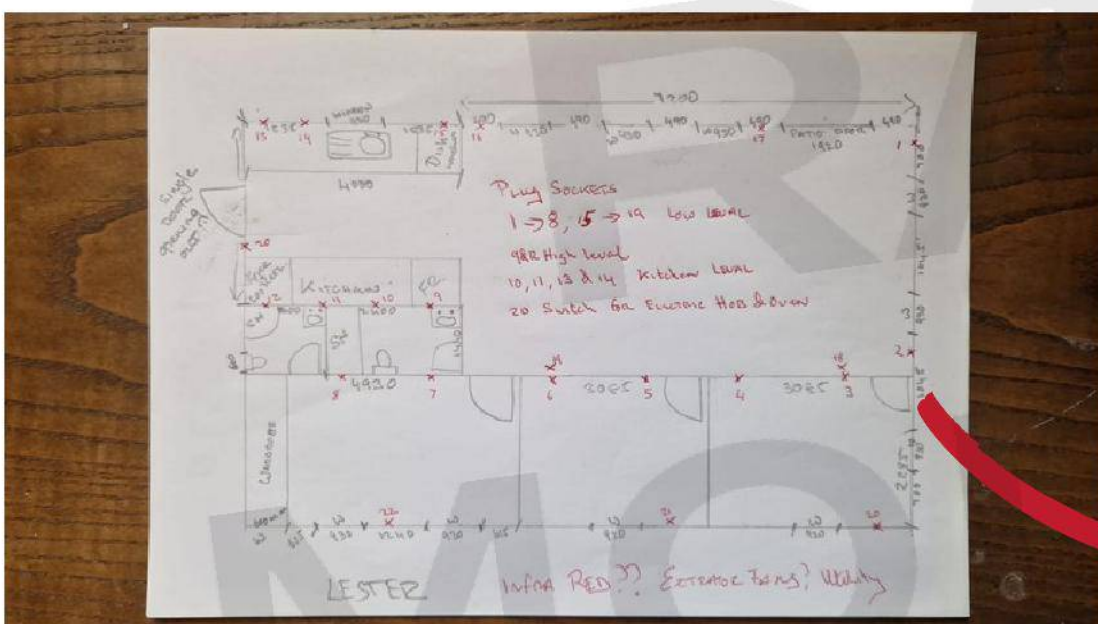
RAYCO MODULAR

© All listed products copyrighted by the Rayco-Group 2023



DESIGN YOUR OWN BESPOKE LAYOUT

We have constructed our units with adaptability in mind. Every customer has their own unique needs and we welcome any specific design requests – such as additional power points, switches. You also have versatility with the placement of windows, doors or even an extra bathroom. Some features are fixed but we endeavour to address any ideas you may have to create your perfect space. Our in-house design team can turn your sketch into a detailed drawing within 48 hours



**Contact
Information**



087-3505095



info@rayco-group.com



Ballinvunna, Kilmuckridge, Gorey, Wexford, Ireland

RAYCO MODULAR

© All listed products copyrighted by the Rayco-Group 2023

Cladding Styles & Colours

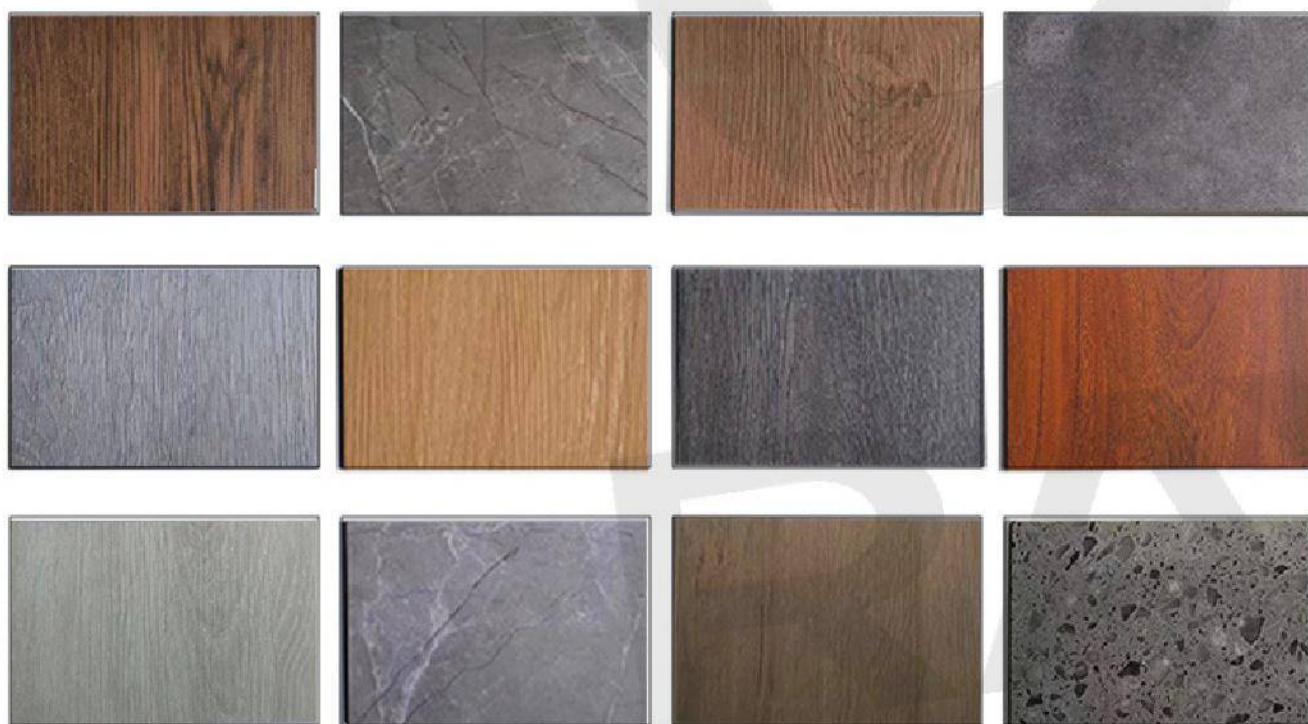
Brickwork



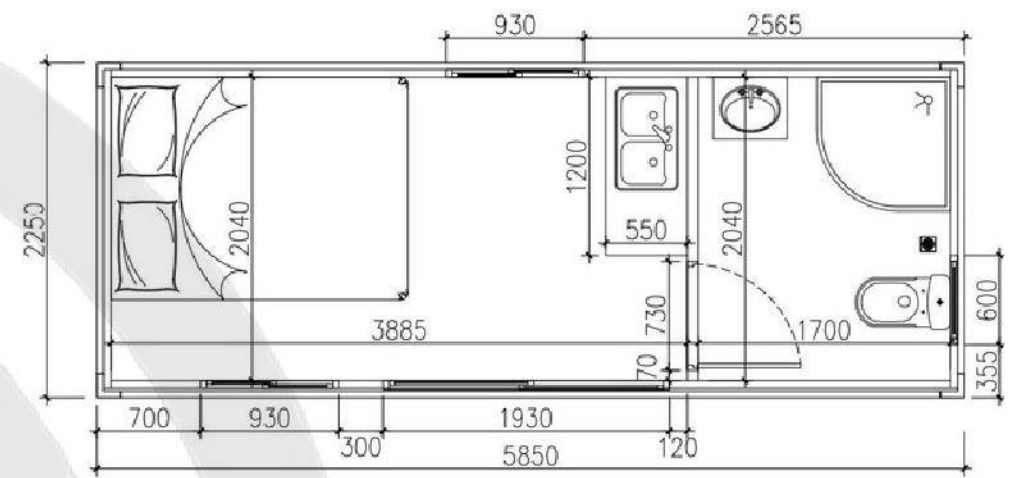
Wooden Panels



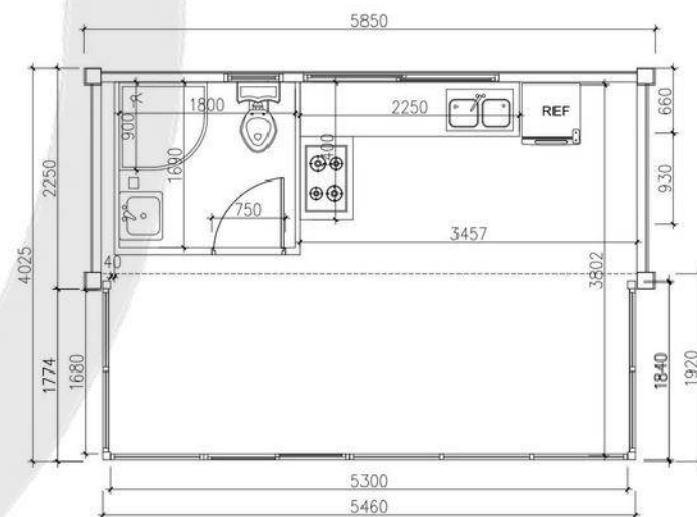
Flooring Options



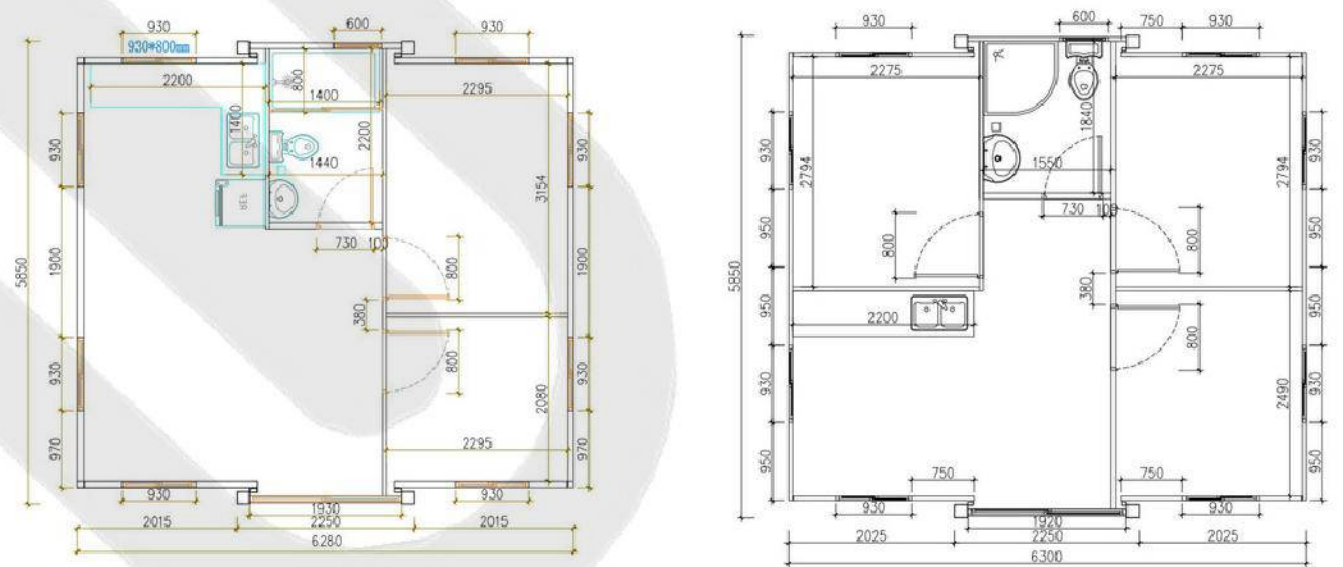
13m² Dimensions



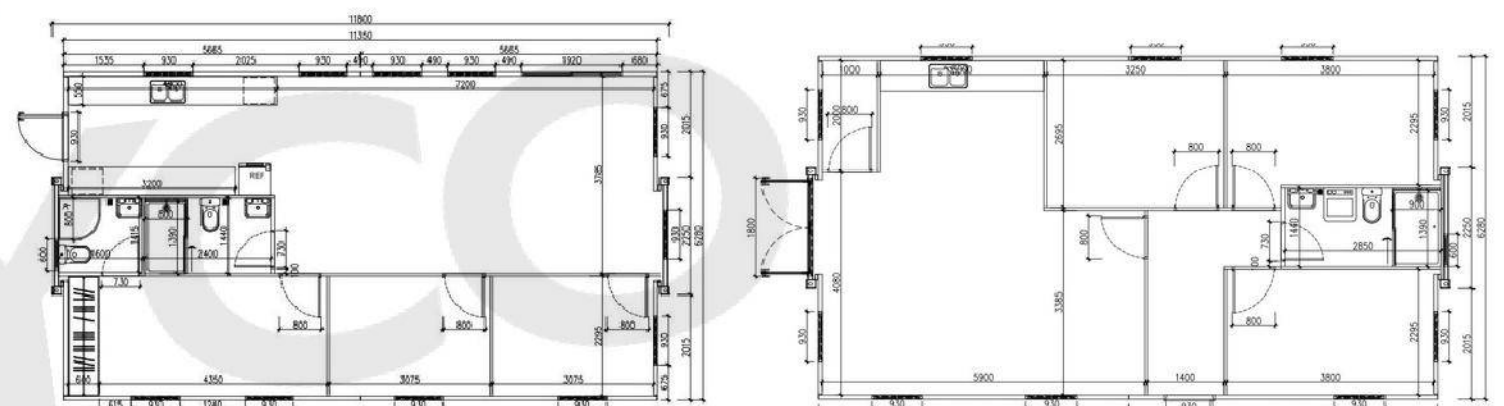
23m² Dimensions



37m² Dimensions



74m² Dimensions



Contact Information



087-3505095



info@rayco-group.com



Ballinvunna, Kilmuckridge, Gorey, Wexford, Ireland

RAYCO MODULAR

© All listed products copyrighted by the Rayco-Group 2023

FAQ's

Are your modular homes customizable? Yes, they are customisable. You can choose from a variety of floor plans as well as flooring and external decorative cladding.

How long does it take to build and install a modular home? It usually takes 10 weeks from design to construction and 2-3 week to install.

Are modular homes energy-efficient? Yes, with fully insulated walls, floors and ceiling our modular homes are very energy efficient.

Can I finance the purchase of a modular home? Yes, most credit unions or banks can offer a loan to cover the cost of a modular home.

Do I require planning permission for a modular home? Our smaller models fall within the footprint allowance of 25m² and would not require full planning permission in this case. Home offices and garden studios also benefit from some exemptions. All our units are designed with mobility in mind. We advise contacting your local council authority for information regarding our larger units. We are not planning advisors

Can I utilise a modular unit as as house extension? Yes. Modular units can be adapted to connect to a primary dwelling. A private contractor will need to be enlisted and planning inquiries should be addressed to your local council.

What are the advantages of choosing a modular home over a conventional home? They have a much smaller footprint and there is no foundation required, so you can place them virtually anywhere. They can be packed up and moved to another location. All steel construction in a CE certified steel production line - No timber used in our units.

Can I choose my own interior finishes and fixtures? Yes, you can choose from multiple flooring options as well as your choice of counter tops.

Do modular homes require regular maintenance? No. Our modular homes require no maintenance as they are made from steel and will not deteriorate like a log cabin.

Are modular homes suitable for all weather conditions in Ireland? Yes, as they are made of a sturdy steel frame, they are able to withstand any weather conditions.

Can I customize the floor plan and layout of a modular home? Yes, there are multiple options for all our modular homes. Our design team will work with you to create the perfect home.

**Contact
Information**



087-3505095



info@rayco-group.com

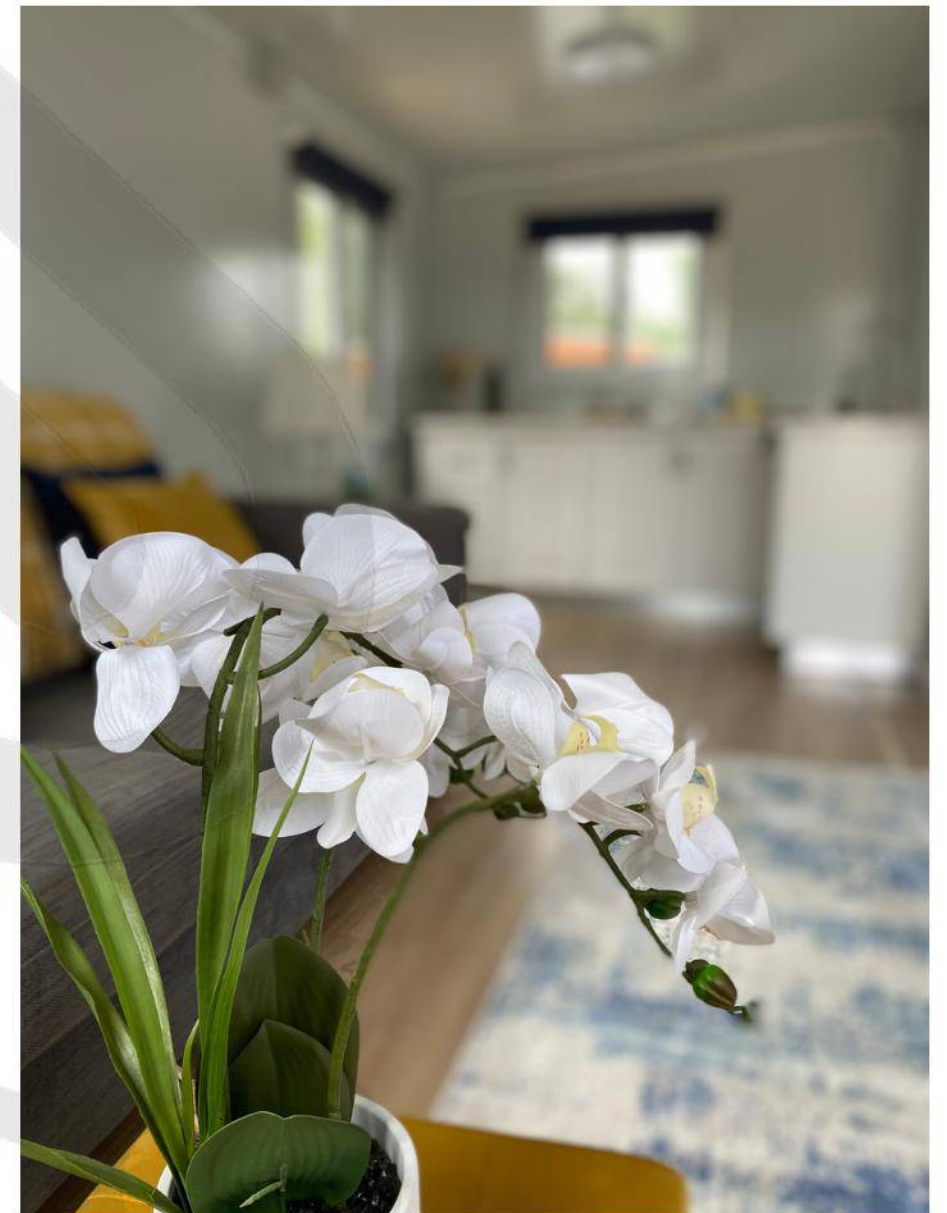


Ballinvunna, Kilmuckridge, Gorey, Wexford, Ireland

RAYCO MODULAR

© All listed products copyrighted by the Rayco-Group 2023

COME VISIT OUR DEMO HOUSE TODAY



Search **RAYCO GROUP** in Google Maps to bring you to our HQ near Gorey, Co. Wexford

**Contact
Information**



087-3505095



info@rayco-group.com



Ballinvunna, Kilmuckridge, Gorey, Wexford, Ireland